



Input Parameters

Input Voltage Range	220-240 Vac
Input Current	<0.03A
Power Factor	> 0.32
Frequency	50Hz
Ambient Temperature	40C
Ambient Temperature	0-40C
Class	II
Maximum Input Power (While Charging Battery)	2.3 W
Average Input Power (Not Charging Battery)	1.8 W

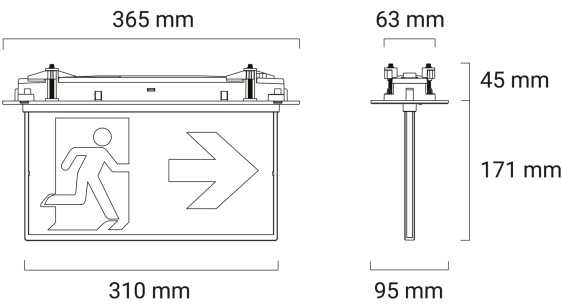
DALI Parameters

Input Current	2 mA
Over Voltage Protection	Yes
Input Voltage	9.5 - 22.5 Vdc

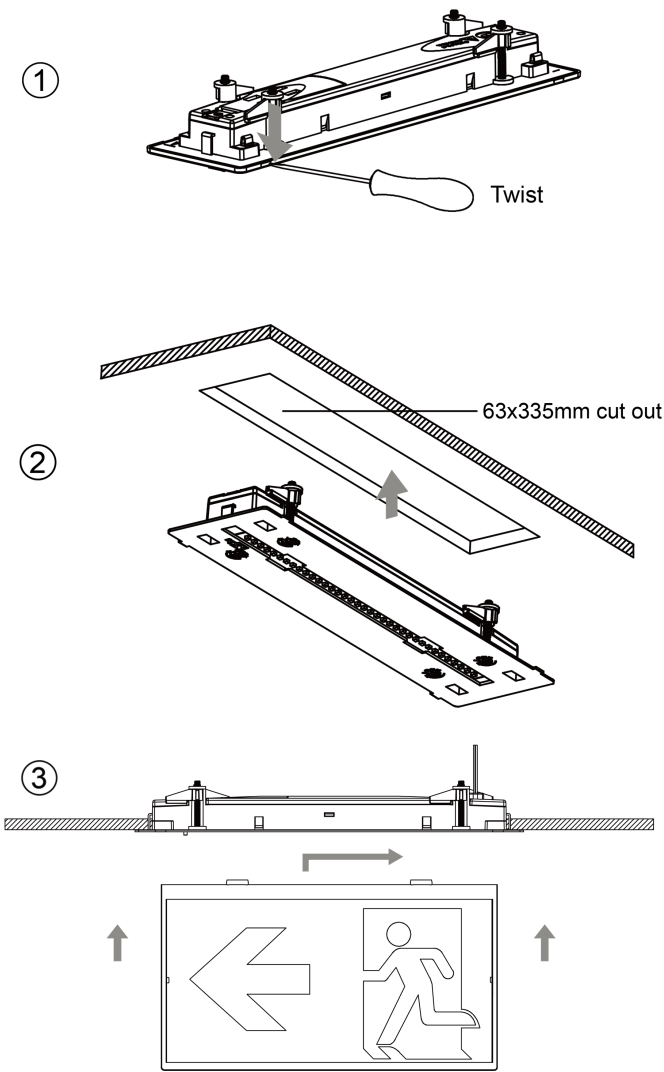
Emergency Parameters

Emergency Duration	180minutes
Battery Code(s)	zc-batt-1A1-ACA
Battery Type	LiFePO4
Input Battery Voltage	2.0-4.0 Vdc
Output Battery Voltage	2.0-3.65 Vdc
Input Battery Current	200mA
Output Battery Current	80mA
Charging Time	24 hours
Emergency Output Power	0.4 W
Exit Sign View Distance	30m

Product Line Drawing



Product Install Picture

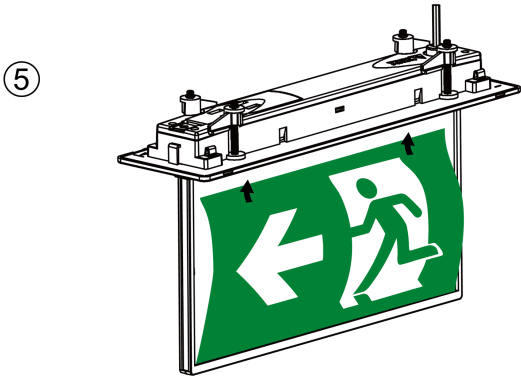
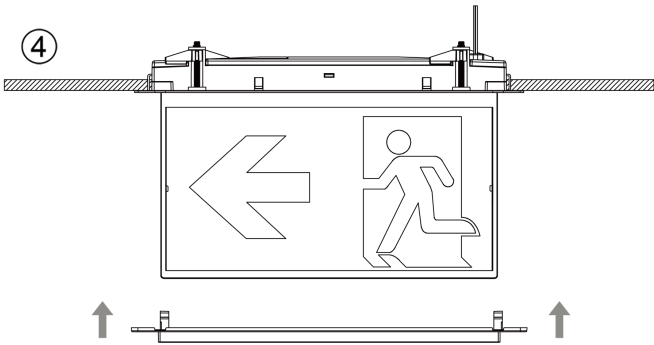


Mechanical	
Material	Polycarbonate
Product Colour	RAL9003
Wiring Type	4 Core Free end
Mounting	Recessed Mount
Ingress Protection	IP20
Product Dimension Length	365mm
Product Dimension Height	217mm
Product Dimension Width	95mm
Product Cutout Dimension LxW	63x335mm

Standards	
IEC 60598-1	Yes
IEC 60598-2-22	Yes
IEC 62034	Yes

Required Safety Warnings

- This product must only be installed by a licensed electrician.
- Before commencing installation turn off and isolate the electrical supply
- Risk of accidental contact with live parts. Do not energise with product open or disassembled.
- The only replaceable part is the battery
- Do not attempt to service other parts of the fitting as this will void the warranty.
- After installation allow the battery to charge for 24 hours before carrying out discharge testing.
- WARNING: ALL MAINTENANCE, SUCH AS BATTERY CHANGE ON THIS LUMINAIRE, TO BE PERFORMED BY QUALIFIED PERSONNEL ONLY. DE-ENERGISE ALL SUPPLIES BEFORE MAINTENANCE.
- As the installer, it is your responsibility to ensure you comply to all relevant building and safety codes. for example the BCA, AS3000
- The replacement of the battery is needed when they no longer meet their rated duration of operation after the corresponding recharge period.
- Dongguan Evolt Electronics Co., Ltd. No.3 Qinghu East Road Yuliangwei Village, Qingxi TownDongguan City, Guangdong, China 523649



Wiring Diagram

