

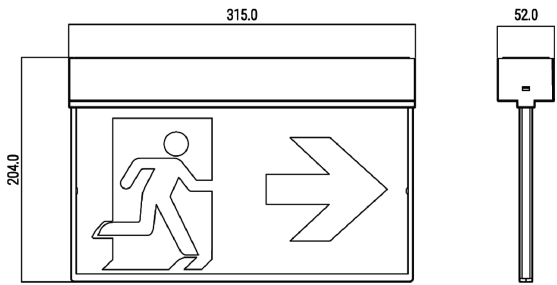


| Input Parameters                             |             |
|--|-------------|
| Input Voltage Range                          | 220-240 Vac |
| Input Current                                | <0.03A      |
| Power Factor                                 | > 0.32      |
| Frequency                                    | 50Hz        |
| Ambient Temperature                          | 40C         |
| Ambient Temperature                          | 0-40C       |
| Class  | II          |
| Maximum Input Power (While Charging Battery) | 2.6W        |
| Average Input Power (Not Charging Battery)   | 2.3W        |

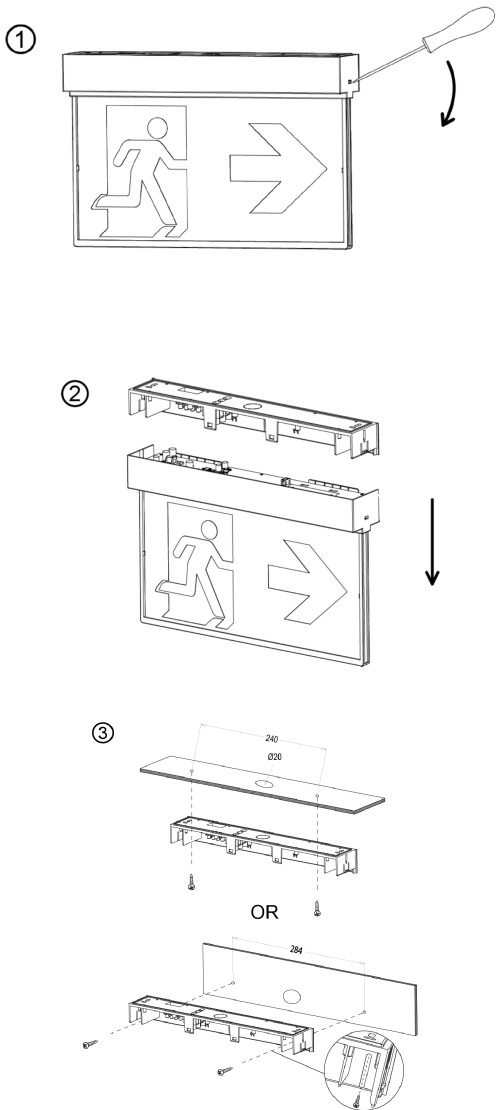
| DALI Parameters         |                |
|-------------------------|----------------|
| Input Current           | 2 mA           |
| Over Voltage Protection | Yes            |
| Input Voltage           | 9.5 - 22.5 Vdc |

| Emergency Parameters    |                 |
|-------------------------|-----------------|
| Emergency Duration      | 180minutes      |
| Battery Code(s)         | zc-batt-1A1-ACA |
| Battery Type            | LiFePO4         |
| Input Battery Voltage   | 2.0-4.0 Vdc     |
| Output Battery Voltage  | 2.0-3.65 Vdc    |
| Input Battery Current   | 300mA           |
| Output Battery Current  | 0.08A           |
| Charging Time           | 24 hours        |
| Emergency Output Power  | 1.0 W           |
| Exit Sign View Distance | 30m             |

Product Line Drawing



Product Install Picture





## Mechanical

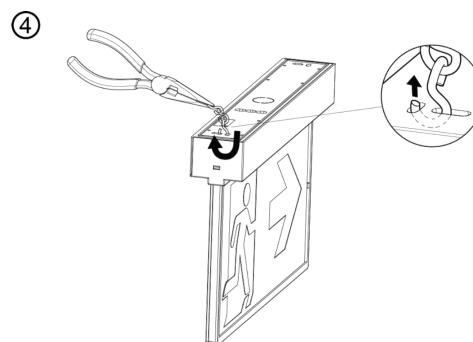
|                          |   |
|--------------------------|---|
| Material                 | Polycarbonate                             |
| Product Colour           | RAL9011                                   |
| Wiring Type              | Push Terminal (0.5-2.5mm2)                |
| Mounting                 | Surface mount/Jack chain mount/Wall mount |
| Ingress Protection       | IP20                                      |
| Product Dimension Length | 315mm                                     |
| Product Dimension Height | 204mm                                     |
| Product Dimension Width  | 52mm                                      |

## Standards

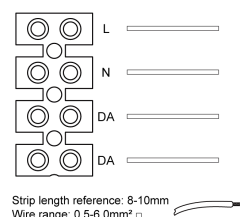
|                |     |
|----------------|-----|
| IEC 60598-1    | Yes |
| IEC 60598-2-22 | Yes |
| IEC 62034      | Yes |

## Required Safety Warnings

- This product must only be installed by a licensed electrician.
  - Before commencing installation turn off and isolate the electrical supply
  - Risk of accidental contact with live parts. Do not energise with product open or disassembled.
  - The only replaceable part is the battery
  - Do not attempt to service other parts of the fitting as this will void the warranty.
  - After installation allow the battery to charge for 24 hours before carrying out discharge testing.
- WARNING: ALL MAINTENANCE, SUCH AS BATTERY CHANGE ON THIS LUMINAIRE, TO BE PERFORMED BY QUALIFIED PERSONNEL ONLY.**
- DE-ENERGISE ALL SUPPLIES BEFORE MAINTENANCE.**
- As the installer, it is your responsibility to ensure you comply to all relevant building and safety codes. for example the BCA, AS3000
  - The replacement of the battery is needed when they no longer meet their rated duration of operation after the corresponding recharge period.
  - For indoor use only
  - Dongguan Evolt Electronics Co., Ltd. No.3 Qinghu East Road Yuliangwei Village, Qingxi TownDongguan City, Guangdong, China 523649



## Wiring Diagram







Photometrics